



GETTING TO KNOW OREGON'S FORESTS

Oregon's forests define our state. From massive Douglas fir in the Coast Range to yellow-bellied Ponderosa in the east, Oregon's diverse forest types deserve protection and celebration. In 1994, the United States adopted the **Northwest Forest Plan** to slow unsustainable logging and protect the little old-growth and mature forests that remained. The plan has protected critical habitat for native wildlife, and stored immense amounts of carbon pollution. The 25th anniversary of the plan marks a perfect time to take a hike in a magnificent ancient forest near you.



1 CAPE FALCON

Forest type: Coastal fog zone and redwoods
Features: Classic coastal forest and open headland views
Distance: 4.5 miles
Difficulty: Moderate



2 KENTUCKY FALLS

Forest type: Douglas-fir
Features: A descent through the forest to three towering waterfalls
Distance: 4.4 miles
Difficulty: Moderate



3 SHRADER OLD-GROWTH GROVE

Forest type: Siskiyou mixed conifer
Features: Giant Douglas-fir and Port Orford cedars
Distance: 1 mile
Difficulty: Easy



4 TWIN LAKES

Forest type: Douglas-fir
Features: Meadows, lakes, and a view add to this ancient forest
Distance: 5.6 miles
Difficulty: Moderate



5 BOULDER CREEK AND BOULDER LAKE

Forest type: Douglas-fir
Features: Huge, old forest surrounding a mountain lake and pristine creek
Distance: 5 miles
Difficulty: Moderate



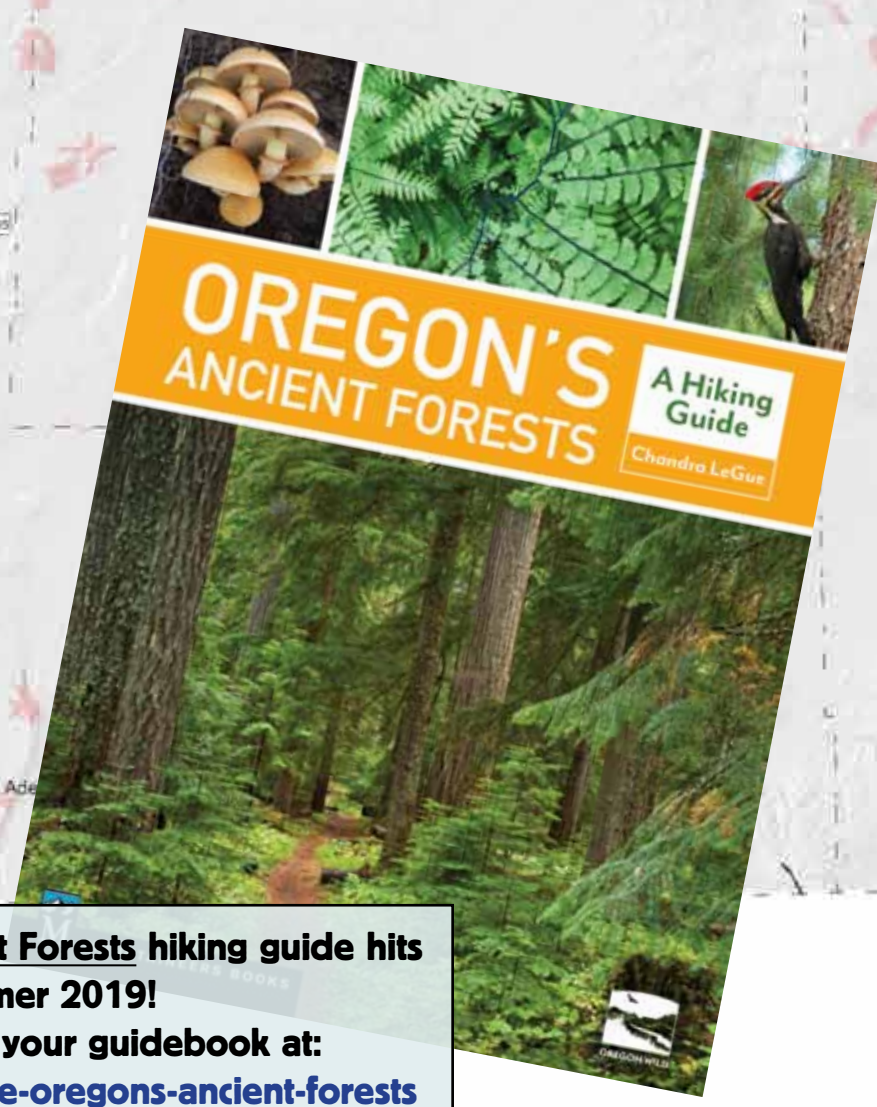
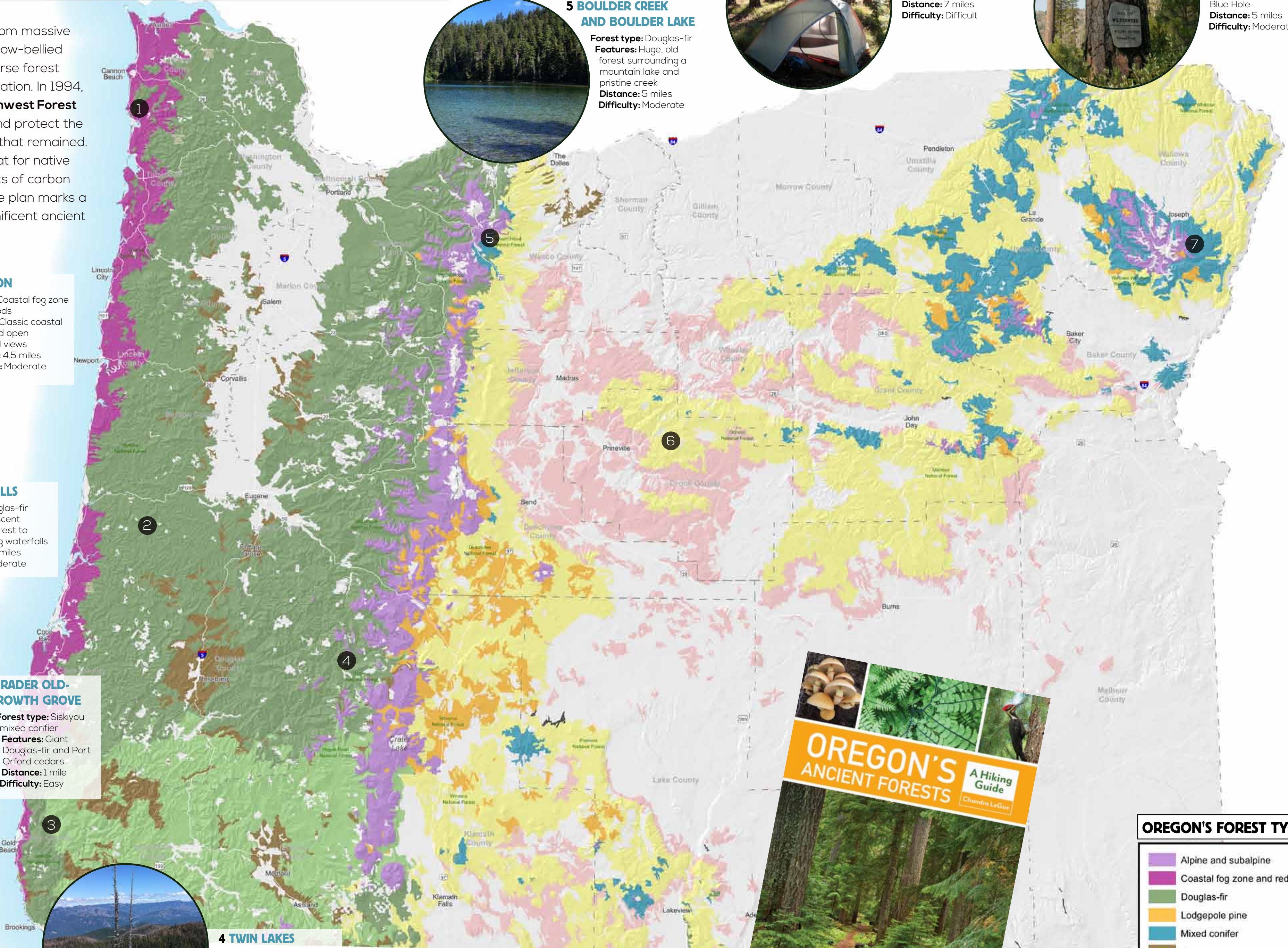
6 LOOKOUT MOUNTAIN

Forest type: Ponderosa pine, western juniper
Features: Diverse forest trail through the heart of the wild Ochoco Mountains
Distance: 7 miles
Difficulty: Difficult



7 IMNAHA RIVER

Forest type: Ponderosa pine
Features: Ancient and recovering burned forest on the way to Blue Hole
Distance: 5 miles
Difficulty: Moderate



Chandra LeGue's **Oregon's Ancient Forests** hiking guide hits bookshelves summer 2019!
Find out where you can get your guidebook at:
www.oregonwild.org/forests/guide-oregons-ancient-forests

OREGON'S FOREST TYPES:

- Alpine and subalpine
- Coastal fog zone and redwood
- Douglas-fir
- Lodgepole pine
- Mixed conifer
- Oregon white oak
- Ponderosa pine
- Quaking aspen
- Siskiyou mixed conifer
- Western juniper

PHOTOS (HIKE PULLOUTS): CHANDRA LEGUE; OREGON'S ANCIENT FORESTS COVER COURTESY MOUNTAINEERS BOOKS.

